



FACSys® 5.1

FAILOVER

WHAT IS FAILOVER?

Failover is the practice of designing system implementations to create a redundant environment reducing the risk of malfunction in critical business systems.

Configuring the FACSys® implementation for failover involves setting a redundant server to monitor the activity of the primary system. This will enable the “monitoring” FACSys® Server to take over operations if the primary server fails.

WHY IMPLEMENT FAILOVER WITHIN YOUR FACSys® ENVIRONMENT?

It is commonplace for network administrators to be concerned about the failure of an operational server. As faxes tend to be mission critical documents, such as purchase orders and contracts, administrator unease of equal magnitude can be extended to the FACSys® environment.

For many organizations, business can grind to a halt if the server fails, however configuring the FACSys® implementation for redundancy and failover can alleviate the risks associated with server malfunction.

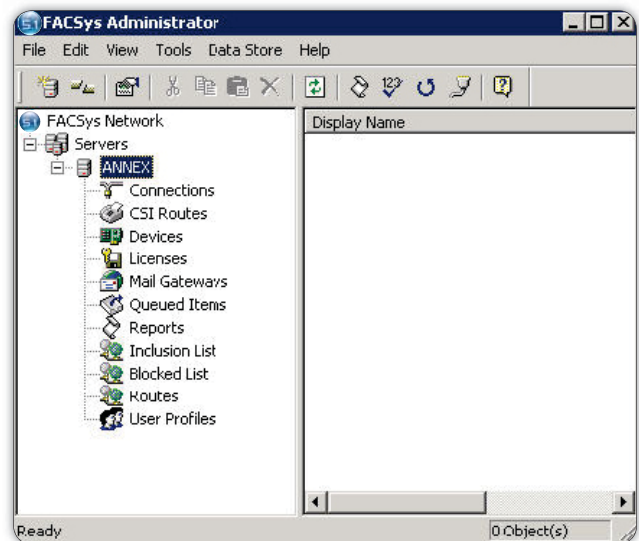
INSTALLATION/CONFIGURATION

Detailed configuration instructions for multiple FACSys® Servers into a server farm are available in the document titled “FACSys® 5.1 Enterprise Server Farm”.

Upon configuration of the FACSys® Servers into the server farm, a decision must be made regarding which server is to act as the monitoring device. There exists the possibility to configure more than one server to act as the monitor. In the event that one supervising server fails, the other configured monitor will function as a back-up.

In the case that two servers are to be configured as the monitoring device, the instructions below must be executed twice (once on each server).

Connect to one of the servers using the FACSys® Administrator program.

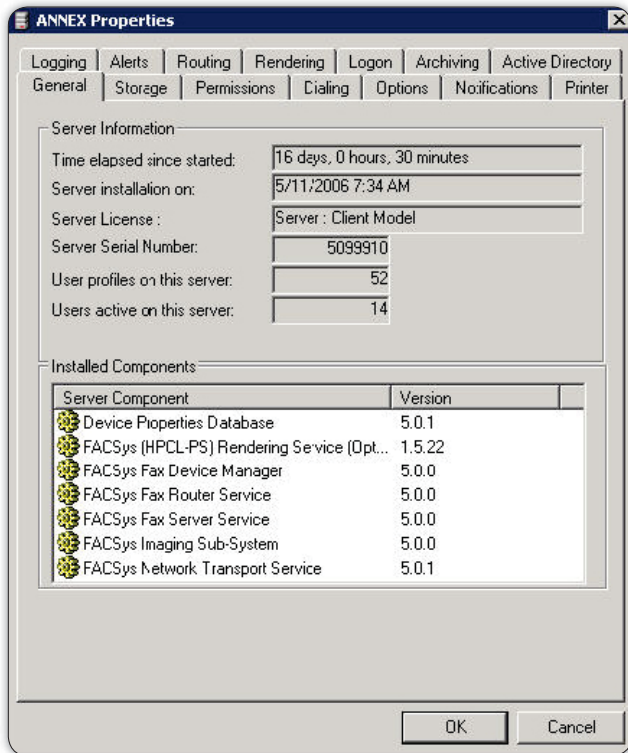




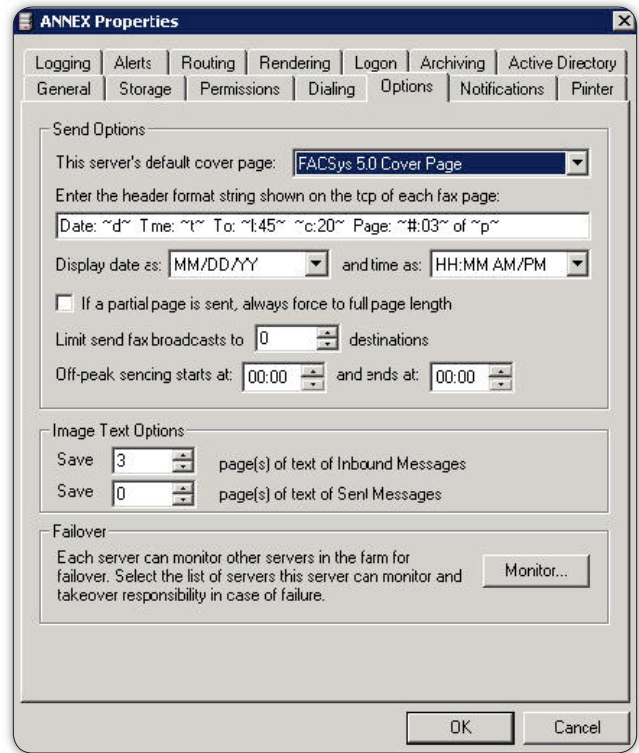
FACSys® 5.1

FAILOVER

Right-click on the server name and select **Properties**.



Click on the **Options** tab.





FACSys® 5.1

FAILOVER

Click on **Monitor** in the Failover Section.

A list of Servers in the server farm will be presented.

Highlight the server that is to be monitored by the current connected server.

Set the interval that the monitoring server will use as a guideline to verify the other server(s) availability and correct functionality, and click **OK**.

Click **OK** to exit the server properties, and save the altered settings.

