




FACSys® 5.1

BARCODE ROUTING TECHNICAL OVERVIEW



BARCODE ROUTING

MINIMUM REQUIREMENTS

The following are the minimum requirements for the FACSys® Barcode Feature:

SERVER REQUIREMENTS:

- A Microsoft® Windows 2003 Server running FACSys® 5.1 Server

CLIENT REQUIREMENTS:

- A Microsoft® Windows Desktop workstation running FACSys® 5.1 Desktop Client
- Barcode Truetype font that supports the following barcode types:
 - **1-D barcode:** Codabar, Code 25, Code 39, Code 128, EAN 8, EAN 13, Patch, UPC A, UPC E
 - **2-D barcode:** PDF-417

SUMMARY

The FACSys® barcode routing feature is an advanced, efficient and secure means of routing inbound fax messages. Using barcodes, inbound fax messages are routed seamlessly to recipients/groups/queues/file locations/document management systems/workflows, based on the Inbound Routing Table.

This feature provides the ability to replace fee-based services such as DID (Direct Inward Dialing) and CID (Caller Identification) for the purpose of routing fax messages.

The barcode routing feature uses three key identification methods: the message ID barcode, the sender barcode and the recipient barcode:

1. MESSAGE ID BARCODE

This feature is used to route returned inbound fax messages to the original sender, based on a barcode generated on the original outbound fax. It works in the following manner:

- A new cover page token is available, which contains the FACSys® Message ID. Customers can create a cover page using this token and must assign a barcode font for this cover page field.
- When a fax is sent out with the cover page (i.e. a form), it will be stamped with the Message ID.
- If the fax is then returned (i.e. with the form completed), the server will recognize the barcode as the Message ID of the fax that was sent, and route it to the FACSys® profile that sent the outbound fax.

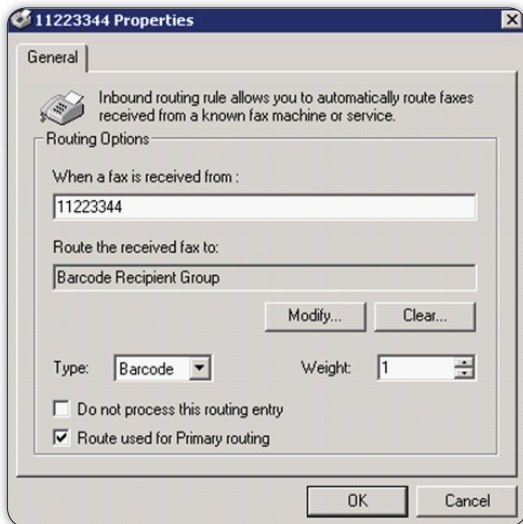


FACSys® 5.1

BARCODE ROUTING TECHNICAL OVERVIEW

2. FACSys® USER'S BARCODE

Upon receiving a fax containing a FACSys® user's barcode, FACSys® reads the barcode and matches it against the routing table entries or user profile. If there is a match, FACSys® will route the message based on the list of users and/or groups that are assigned to that particular routing entry.



3. RECIPIENT BARCODE

Adding a recipient's barcode ID on an outbound fax allows the recipient fax system (if barcode capable) to match it against their list of known barcode numbers associated with their user profile list.

